

Winter 2019

# Out of the Blue

Newsletter for Little Blue Natural Resources District

## PERFECT WEATHER FOR 2019 WATER JAMBROEE

HEIDI MCCLINTOCK | MEDIA & COMMUNICATIONS

Over 475 students from 17 area schools participated in this year's Water Jamboree at Liberty Cove Recreation Area near Lawrence, Nebraska, September 25 and 26.

The water jamboree is an educational fun day for fifth and sixth-grade students from schools located in the Little Blue Natural Resources District. Students were able to attend sessions on the power of water, life at Liberty Cove, irrigation flow, bird migrations, wildlife, how rivers have effects on our environment and much more.

CONTINUES ON PAGE 3.



### This issue:

**Staff Updates**

**PAGE 02**

**Water Jamboree**

**PAGE 03**

**Fall Static Water**

**PAGE 04**

**Fall Water Charts**

**PAGE 05**

**Tree Program**

**PAGE 06**

**Calendar**

**PAGE 07**

## CONNECT WITH US



Little Blue Natural Resources District

@littlebluenrd

@littlebluenrd

[www.littlebluenrd.org](http://www.littlebluenrd.org)

[lbnerd@littlebluenrd.org](mailto:lbnerd@littlebluenrd.org)

# STAFF UPDATES



**Tyler Goeschel**  
Assistant Manager

The Little Blue Natural Resources District would like to introduce our new assistant manager, Tyler Goeschel, who came on board in September.

Tyler was born and raised in Lincoln, Nebraska. He received a bachelor's degree in environmental studies in 2013 from the University of Nebraska and subsequently received a master's degree in natural resources in 2016 from the University of Vermont. Studying agricultural soils and best management practices as they relate to environmental health was a driving force behind his studies.

Aside from his schooling, Tyler has had many jobs, including as a wildland firefighter, based out of Oregon, for 3 years from 1999-2000, and 2003, a greenhouse laborer from 2007-2009, a USDA Agricultural Research Service intern from 2012-2013 and most recently as a physics teacher at an international high school in Shanghai, China from 2017-2019.

"I'm happy to be back in Nebraska working with important soil and water issues that our stakeholders care about," said Tyler. "Assisting to improve soil and water health is both personally and occupationally rewarding. If water is Nebraska's greatest natural resource, then soil is a close second, and to me it is imperative that we keep both viable and healthy for generations to come."



**Erika Brinegar**  
Natural Resources Coordinator

Erika has been full time with the district since March 2019 as the natural resources coordinator. Previously she was a high school business teacher for two years in Maxwell, Nebraska.

Erika is married to Dietrich and they have recently bought a home in Davenport. Her husband, Dietrich, is the owner of Nebraska Shrimp Company and raises shrimp in Carleton. In her free time, she likes being outside when it's nice out, hanging with her family and play a game of solitaire.

She is responsible for the cost-share program and managing projects. Also, she will be helping Alicia keep our Beehive database up to date.



**Heidi McClintock**  
Media & Communications Specialist

My name is Heidi McClintock and I am your new media and communications specialist.

Before coming to the Little Blue NRD, I was an admissions representative for Chadron State College from 2017-2019. I deployed to Iraq from 2016-2017 with the Nebraska Army National Guard's Main Command Post Operational Detachment, 1st Infantry Division where I served as a public affairs operations non-commissioned officer. Previously to that, I worked full-time for the Nebraska National Guard as a public affairs specialist from 2011-2016.

I am still serving in the Nebraska Army National Guard and have been in for just over 10 years. I love serving my state and country.

I received my bachelor's degree in communications with a minor in organizational communication in 2016.

My son, Beau – age 5, and I enjoy taking care of our three miniature donkeys and small cattle operation.





## 2019 WATER JAMBOREE (cont.)

The event wouldn't have been such a great success if it wasn't for the numerous volunteers from the local communities, schools, other natural resource districts, Little Blue NRD, University of Nebraska-Lincoln Cooperative Extension, Nebraska Games and Parks, Groundwater Foundation and U.S. Department of Agriculture's Natural Resources Conservation Service.

Participating schools were Red Cloud, Silver Lake, Sutton Christian, Kenesaw, Ohana Fullerton, St. Michaels, Shickley, Zion Hastings, Deshler, Adams Central, Doniphan-Trumbull, Sutton, Thayer Central, Lawrence-Nelson, Deshler Lutheran, Bruning-Davenport and Meridian.

According to students of Shickley Public School, they enjoyed the opportunity to be able to make a water wheel and see their wheel work as the water was poured on it. They even said they made it a friendly competition against classmates to see who could make the best wheel.

The overall goal of the water jamboree is to teach these concepts early with hands-on activities.





# 2019 FALL STATIC WATER LEVELS

KEVIN ORVIS | PROJECT MANAGER

Last year, the fall colored water level map had changes that ranged from declines shown in red and rises shown in blue. This fall, there was difficulty finding enough different shades of blue to depict the water table rises across the district.

On the change map, the weighted average rise for Geologic Unit 1 was +2.57 feet and for Geologic Unit 2 the change was +1.56 feet. This was the second-largest fall rise. Previously, the District averaged an increase of +3.20 feet from the fall of 1992 to 1993. However, the District wasn't using weighted average change or differing geologic areas then.

The darker shades of blue on the map had water level rises of five to six feet in Unit 1 and two to three feet in Unit 2. The District doesn't track fall water level changes, only the spring levels are used for regulatory purposes based on a weighted average graph. However, the staff has added four graphs from dedicated observation wells with daily data from the last nine years. Note how significant the rise has been from the summer of 2018 to 2019 for each. (Fangmeier and Schoenrock are in Unit 2. Wright and Werner in Unit 1.)

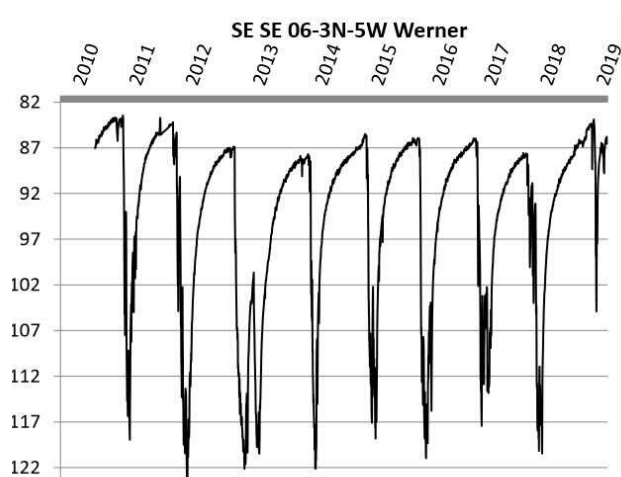
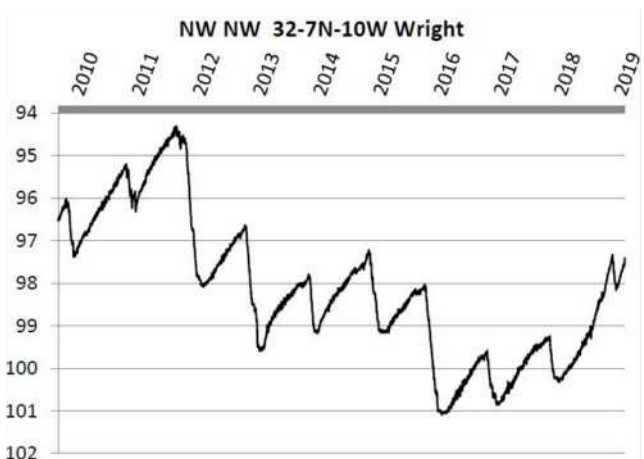
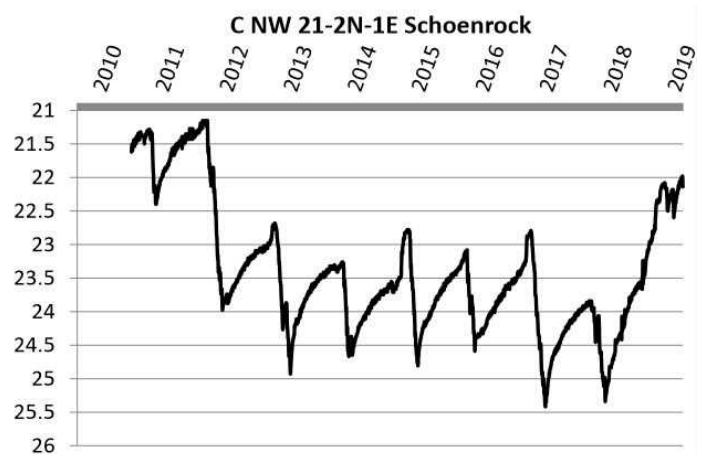
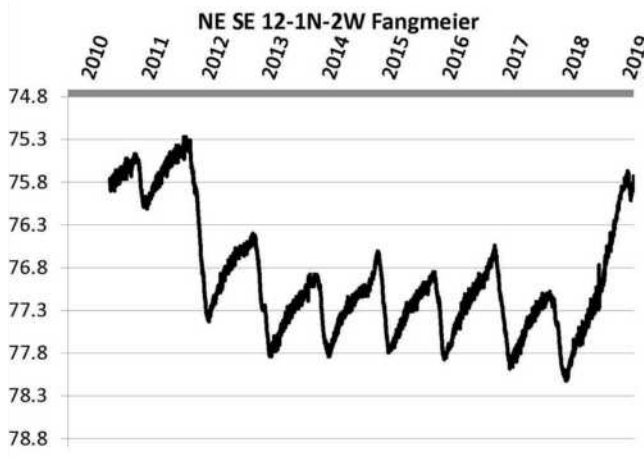
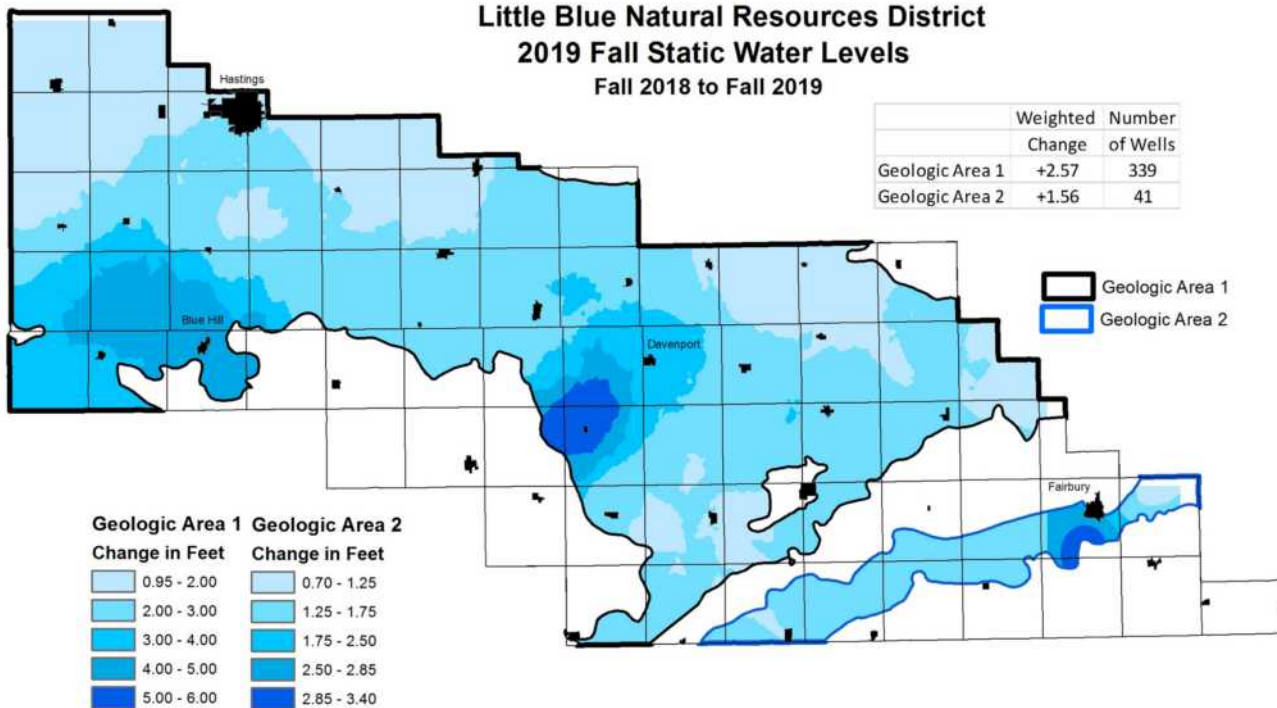
Staff wouldn't expect to see a two and a half foot rise in the spring water table because of seeps and springs like those pictured below, along the river east of Hebron. Some of this fall groundwater rise will discharge back as streamflow over the winter.

U.S. Geological Survey recorded the Little Blue River's flow at Hollenberg on November 4 at 370 cubic feet per second. The median for this date for the last 44 years is 148 cubic feet per second, so there is a surplus of water in the system right now. The surplus of rainfall received this summer, and reduced demand on the aquifer will very likely make a positive change for spring levels in 2020.

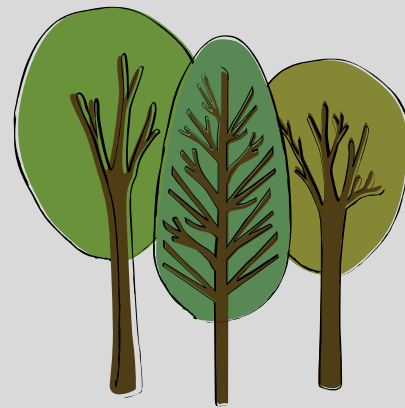


# Little Blue Natural Resources District 2019 Fall Static Water Levels Fall 2018 to Fall 2019

	Weighted	Number
	Change	of Wells
Geologic Area 1	+2.57	339
Geologic Area 2	+1.56	41



# 2020 TREE PROGRAM



Trees can enrich your life in numerous ways. Trees provide wildlife habitat, reduce soil erosion, enhance water quality, save energy costs, help clear the air and add beauty to our homes and farmsteads.

## District Plants

- Minimum order is 100 trees.
- All orders must be submitted before March 15th.
- Cost per tree is \$1.25 plus sales tax, planting charge is \$1.25 per tree plus sales tax. Minimum charge for District Plants is \$131.88 (5.5% sales tax); this will be charged even if we plant less than 100 trees.
- Payment for the trees ordered is due when the tree plan is forwarded to the District's office.
- Sites must be adequately tilled.
- The District has a "No-Replacement Policy on the loss of district or hand planted trees.

## Weed Barrier

- Minimum application is 300 feet.
- Cost of weed barrier is \$0.75 per lineal foot plus sales tax. Installation charge is \$0.75 per lineal foot plus sales tax. Minimum charge for a weed d barrier application is \$237.38 (5.5% sales tax); this will be charged even if we apply less than 300 feet.
- Payment of 75% of the total (material) weed barrier cost must be made when submitting a tree plan.
- Sites with weed barrier must be adequately tilled with a width of 10 feet.

## Hand Plants

- Trees may be ordered for any number of species. Cost is \$1.25 per tree plus sales tax and a \$2.00 wrapping/handling fee plus sales tax per order.
- Payment is to be received at the time the order is placed.

# Calendar

## Pumpage Reports | December 31, 2019

Owners of any wells or series of wells designed to pump 50 gpm or more are required to report annual withdrawals. This includes irrigation, municipal, commercial and wildlife. Reporting is mandatory.

If you need a new form or have any questions, please contact Kevin or Alicia at 402-364-2145.

## Operators Training

All farm operators who farm in designated water quality sub-areas are required to attend operator training. Crop consultants are also required to attend training and will receive continuing education credits for their participation. Recertification is required every four years.

**Classes will be held from 9 am to 12 noon.**

**Jan 9 | Stastny Community Center | Hebron**

**Jan 16 | Davenport Community Center | Davenport**

**\*Feb 20 | Superior Country Club | Superior | 1-4pm**

## Soil Sampling | April 1, 2020

Any farm operator who intends to plant corn, sorghum or forage sorghum in the ensuing crop year on a field larger than ten (10) acres is required to collect a minimum of one soil sample for each 80 acres of farm operation, and have it analyzed for organic matter and residual soil nutrients.

The soil samples shall consist of a composite surface sample from 15 – 20 cores collected to a depth of 8 inches, and analyzed for general fertility and nitrate – N; and a subsurface sample from 6 – 8 cores to a depth of 24 inches and analyzed for nitrate – N. Soil sampling to 36 inches is encouraged but not required.

Operators must retain soil sample results because the District may request a copy of the soil sample results on a random basis to assure operator compliance with this requirement. If you have any questions about soil sampling, call Tyler at 402-364-2145.

## Chemigation | June 1, 2020

Just a friendly reminder that chemigation training dates begin at the first of the year. Check with your local extension office for dates and locations. Keep in mind, chemigation application permits (new and renewals) are due June 1st.





*Happy New Year!*

#### **LITTLE BLUE STAFF**

Kyle Hauschild - General Manager  
Tyler Goeschel - Assistant Manager  
Marie Herbek - Administrative Secretary  
Mandy Klipp - District Secretary  
Alicia Epps - Database Specialist  
Heidi McClintock - Media & Communications Specialist  
Erika Brinegar - Natural Resources Coordinator  
Kent Thompson - Operations Supervisor  
Kevin Orvis - Project Manager  
Jed Bergen - Resources Technician  
Jim Oltmans - Water Resources Technician

#### **FIELD OFFICES**

Adams County NRCS Secretary—Robin Leichty  
Clay County NRCS Secretary—Allyson Peshek  
Fillmore County NRCS Secretary—Sylvia Jividen  
Jefferson NRD/NRCS Technician—Christine Zabokrtsky  
Jefferson County NRCS Secretary—Paula Schultz  
Nuckolls County NRCS Secretary—vacant  
Thayer County NRCS Secretary—vacant  
Webster County NRCS Secretary—Lynetta Snelling

#### **BOARD OF DIRECTORS**

Sub-District 1: Mason Hoffman, Roseland  
Sub-District 1: Robert Trausch, Juniata  
Sub-District 2: Warren Brakhahn, Hastings  
Sub-District 2: Charles Rainforth, Hastings  
Sub-District 3: Zachary Hollister, Hastings  
Sub-District 3: Everett Kellogg, Hastings  
Sub-District 4: Kevin Kissinger, Glenvil  
Sub-District 4: Jesse VonSpreckelsen, Clay Center  
Sub-District 5: Warren Taylor, Glenvil  
Sub-District 5: Lyle Schroer, Lawrence  
Sub-District 6: Lyle Heinrichs, Shickley  
Sub-District 6: Steve Shaw, Edgar  
Sub-District 7: Joseph Hergott, Hebron  
Sub-District 7: Alan Wiedel, Hebron  
Sub-District 8: Jay Meyer, Daykin  
Sub-District 8: Bill Glenn, Fairbury  
Member At Large: Marlin Kimle, Kenesaw

#### **RURAL WATER PROJECTS**

Project Manager - Kevin Orvis  
Rural Water Supervisor - Bruce Dux  
Clerk - Paula Schultz

**"Little Blue Natural Resources District is an Equal Opportunity Employer & Provider."**

The Little Blue NRD's Out of the Blue is a publication of the Little Blue Natural Resources District. Requests to be placed on the Out of the Blue mailing list and/or comments regarding information in this publication should be directed to Heidi McClintock, Media & Communications Specialist, 100 East 6th Street, PO Box 100, Davenport, NE 68335.